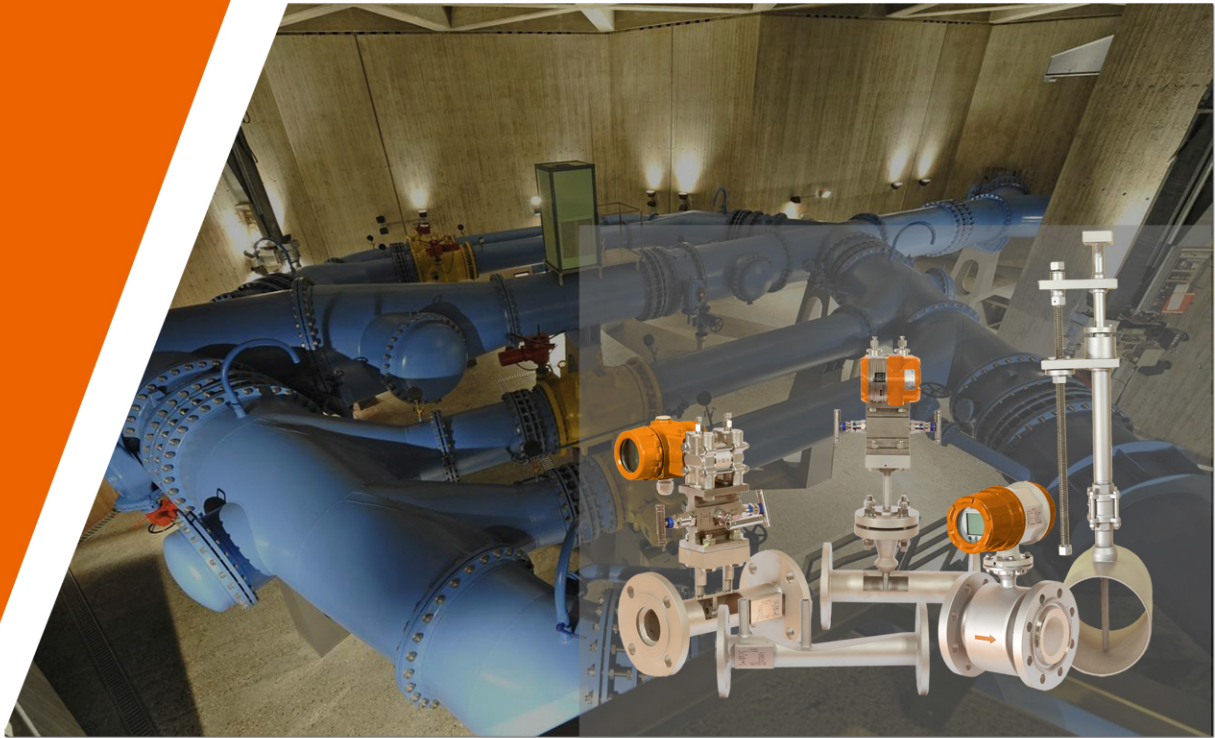


BOOCCA

BOOCCA Shanghai Industry Co., Ltd

2018

Flowmeter BROCHURE



Integrity, Cooperation, Double Win
Unity, Innovation, Efficiency





ABOUT US

BOOCCA Shanghai Industry is a high technology production and service company. The company is mainly engaged in research, development, production and sales of high accuracy & stability flowmeter.

BOOCCA products have proprietary intellectual property rights, protected by corresponding patents. Solid technical strengths and complete proprietary intellectual property rights guarantees the excellence of BOOCCA products. The unique excellence of BOOCCA products provides more competence in performance, more safety and reliability in quality compared to other company's products. Therefore the BOOCCA team and their products meet better the demands and requirements of the market.

Professional equipment from manufactures in US, Germany, Switzerland and Japan combined with the high education of the BOOCCA team are the basis for high efficiency, quality and reliability of the BOOCCA Production Line. These equipments have been tailored and adapted to the needs of BOOCCA Production

Line after research and development of BOOCCA's experts. It guarantees that BOOCCA can provide customers a series of products with excellent technical data and reliable & stable quality. Our company will carry on the principle "good service is the base of the development" to do project design, product choose, making plan, establishment service, and quality assurance.

We will discuss, communicate, and cooperate with customers until resolve the technical problems of flow meters and fluid systems. Our company will always put manage idea of "satisfy customer, regard staff and pursue excellence" as our tenet, making great efforts to be the top enterprise in the filed of fluid measurement and fluid filtration.

BOOCCA Shanghai Industry Co., Ltd. target: Establish BOOCCA as a world-class brand through superb quality and first class service. Developing and growth in Chinese market with its partners. Use of the challenges and opportunities for the BOOCCA products in overseas.



Differential Pressure Flow Sensor

BF00



- ☆ Type: Balanced Flow Sensor
- ☆ Turndown ratio: 10:1 or more
- ☆ Accuracy: $\pm 0.5\%$ repeatability: $\pm 0.1\%$
- ☆ The Min. flow rate(gas): 3m/s
- ☆ The Min. flow rate(liquid): 0.3m/s
- ☆ The Min. flow rate(steam): 9m/s
- ☆ Pressure loss: change as β
- ☆ Straight pipe section: front 0.5D behind 0.5D
- ☆ Pressure rating: ANSI 2500
- ☆ Diameter range: DN15-1000 or more
- ☆ Measure: gas, liquid, steam

- ☆ Type: Orifice Flow Sensor
- ☆ Turndown ratio: 3:1
- ☆ Accuracy: $\pm 2.0\%$ Repeatability: $\pm 0.2\%$
- ☆ The Min. flow rate(gas): 3m/s
- ☆ The Min. flow rate(liquid): 0.3m/s
- ☆ The Min. flow rate(steam): 9m/s
- ☆ Pressure loss: change as β
- ☆ Straight pipe section: front 10D behind 5D
- ☆ Pressure rating: ANSI 2500
- ☆ Diameter range: DN15-1000 or more
- ☆ Measure: gas, liquid, steam

BF01



BF10



- ☆ Type: Velocity Averaging Flow Sensor
- ☆ Turndown ratio: 10:1 or more
- ☆ Accuracy: $\pm 0.5\%$ Repeatability: $\pm 0.1\%$
- ☆ The Min. flow rate(gas): 3m/s
- ☆ The Min. flow rate(liquid): 0.3m/s
- ☆ The Min. flow rate(steam): 9m/s
- ☆ Pressure loss: 3% DP
- ☆ Straight pipe section: front 7D behind 3D
- ☆ Pressure rating: ANSI 2500
- ☆ Diameter range: DN8-12000 or more
- ☆ Measure: gas, liquid, steam

- ☆ Type: Accelerated Flow Sensor
- ☆ Turndown ratio: up to 65:1
- ☆ Accuracy: $\pm 0.5\%$ Repeatability: $\pm 0.1\%$
- ☆ The Min. flow rate(gas): 3m/s
- ☆ The Min. flow rate(liquid): 0.3m/s
- ☆ The Min. flow rate(steam): 9m/s
- ☆ Pressure loss: 3% DP
- ☆ Straight pipe section: none
- ☆ Pressure rating: ANSI 2500
- ☆ Diameter range: DN8-1000 or more
- ☆ Measure: gas, liquid, steam

BF10-050



BF05



- ☆Type: Venturi Flow Sensor
- ☆Turndown ratio: 10:1 or more
- ☆Accuracy: $\pm 0.5\%$ Repeatability: $\pm 0.1\%$
- ☆The Min. flow rate(gas): 3m/s
- ☆The Min. flow rate(liquid): 0.3m/s
- ☆The Min. flow rate(steam): 9m/s
- ☆Pressure loss: change as β
- ☆Straight pipe section: front 3D behind 1D
- ☆Pressure rating: ANSI 2500
- ☆Diameter range: DN15-2000 or more
- ☆Measure: gas, liquid, steam

- ☆Type: Wedge Flow Sensor
- ☆Turndown ratio: 10:1 or more
- ☆Accuracy: $\pm 0.5\%$ Repeatability: $\pm 0.1\%$
- ☆The Min. flow rate(gas): 3m/s
- ☆The Min. flow rate(liquid): 0.3m/s
- ☆The Min. flow rate(steam): 9m/s
- ☆Pressure loss: change as β
- ☆Straight pipe section: front 6D behind 3D
- ☆Pressure rating: ANSI 2500
- ☆Diameter range: DN15-1000 or more
- ☆Measure: gas, liquid, steam

BF20



BF20R



- ☆Type: Rectangle Flow Sensor
- ☆Turndown ratio: 30:1 or more
- ☆Accuracy: $\pm 0.5\%$ Repeatability: $\pm 0.1\%$
- ☆The Min. flow rate(gas): 3m/s
- ☆The Min. flow rate(liquid): 0.3m/s
- ☆The Min. flow rate(steam): 9m/s
- ☆Pressure loss: change as β
- ☆Straight pipe section: front 6D behind 3D
- ☆Pressure rating: ANSI 2500
- ☆Diameter range: DN15-1000 or more
- ☆Measure: gas, liquid, steam

- ☆Type: Cone Flow Sensor
- ☆Turndown ratio: 10:1 or more
- ☆Accuracy: $\pm 0.5\%$ Repeatability: $\pm 0.1\%$
- ☆The Min. flow rate(gas): 3m/s
- ☆The Min. flow rate(liquid): 0.3m/s
- ☆The Min. flow rate(steam): 9m/s
- ☆Pressure loss: change as β
- ☆Straight pipe section: front 3D behind 1D
- ☆Pressure rating: ANSI 2500
- ☆Diameter range: DN15-1000 or more
- ☆Measure: gas, liquid, steam

BF30



Velocity-type Flowmeter

BF40



- ☆Type: Electromagnetic Flowmeter
- ☆Turndown ratio: 33:1 or more
- ☆Accuracy: $\pm 0.5\%$
- ☆Repeatability: $\pm 0.2\%$
- ☆Optimum flow rate: 0.3m/s-10m/s
- ☆Full scale value: 0.02m/s-15m/s
- ☆Straight pipe section: front 5D behind 3D
- ☆The Max. temperature: 160°C
- ☆The Max. pressure: PN4.0MPa or more
- ☆Diameter range: DN3-2000 or more
- ☆Measure: liquid

- ☆Type: Vortex Flowmeter
- ☆Turndown ratio: up to 25:1
- ☆Accuracy: $\pm 1.0\%$ Repeatability: $\pm 0.2\%$
- ☆The Min. flow rate(gas): 3m/s
- ☆The Min. flow rate(liquid): 0.3m/s
- ☆The Min. flow rate(steam): 9m/s
- ☆Straight pipe section: front 15D behind 5D
- ☆The Max. temperature: 350°C
- ☆The Max. pressure: PN10.0MPa
- ☆Diameter range: DN15-6000
- ☆Measure: gas, liquid, steam

BF50



BF60



- ☆Type: Thermal Mass Flowmeter
- ☆Turndown ratio: up to 100:1
- ☆Accuracy: $\pm 1.0\%$
- ☆Repeatability: $\pm 0.2\%$
- ☆The Min. flow rate: 0.001m/s
- ☆Pressure loss: negligible
- ☆Straight pipe section: front 10D behind 5D
- ☆The Max. temperature: 400°C
- ☆The Max. pressure: PN10.0MPa
- ☆Diameter range: DN15-6000
- ☆Measure: gas

- ☆Type: Ultrasonic Flowmeter
- ☆Turndown ratio: up to 100:1
- ☆Accuracy: $\pm 1.0\%$
- ☆Repeatability: $\pm 0.3\%$
- ☆The Min. flow rate(gas): 0.03m/s
- ☆The Min. flow rate(liquid): 0.01m/s
- ☆Straight pipe section: front 10D behind 5D
- ☆The Max. temperature: 160°C
- ☆The Max. pressure: PN42.0MPa
- ☆Diameter range: DN15-5000 or more
- ☆Measure: gas, liquid

BF70





Product: BF10 Velocity-Averaging Tube Flow Sensor

Industry: power plant



Product: BF10 Velocity-Averaging Tube Flow Sensor

Industry: chemical industry



Product: BF20 Wedge Flow Sensor

Industry: salt industry



Product: BF30 Cone Flow Sensor

Industry: metallurgy



BOOCCA Shanghai Industry Co., Ltd

TEL: +86 21 58543235

FAX: +86 21 50550005

E-MAIL: export@boocca.com

URL: www.boocca.com

Add: No 1090 Century Avenue, Pudong, Shanghai

Factory: Building D, No 691, Jianle Rd, Lvxiang

Town Industry Park, Jinshan, Shanghai

BOOCCA GROUP